



## Brunswick Court, Leeds, LS2 7SA, £766 PCM

\*\*\*50% OFF FIRST MONTH'S RENT IF START DATE BY 1st DECEMBER\*\*\*NORMAL RENT £800\*\*\*Well presented One bedroom apartment located just off Regent Street. The furnished accommodation comprises: Entrance hall, Open plan Living Room with fully fitted Kitchen with white goods, Double bedroom and Bathroom with walk in shower. Parking if available is an additional £50 per month. 5 Minutes walk to Victoria Gate. Deposit £894. EPC Rating D. Council tax band B.



1

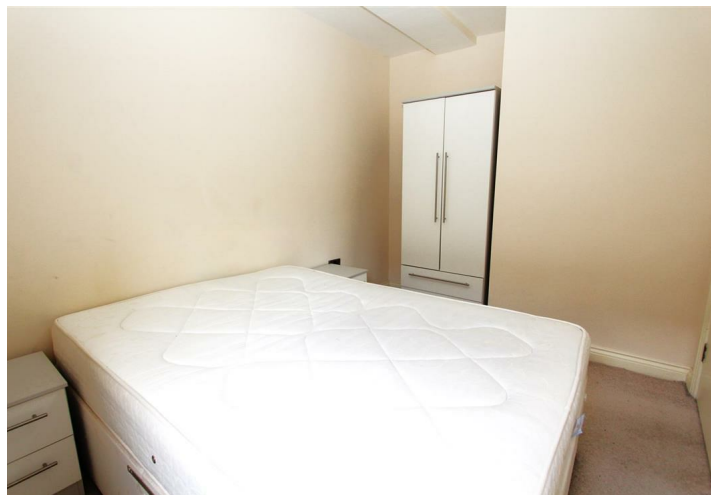


1



B

## Brunswick Court, Leeds, LS2 7SA



- Ground Floor
- Furnished
- 1 Bedroom
- Fitted Kitchen
- Parking available at additional cost.

Energy Efficiency Rating		
	Current	Potential
Very energy efficient - lower running costs		
(92 plus) A		
(81-91) B		
(69-80) C		
(55-68) D		
(39-54) E		
(21-38) F		
(1-20) G		
Not energy efficient - higher running costs		
<b>England &amp; Wales</b>	EU Directive 2002/91/EC	

Environmental Impact (CO <sub>2</sub> ) Rating		
	Current	Potential
Very environmentally friendly - lower CO <sub>2</sub> emissions		
(92 plus) A		
(81-91) B		
(69-80) C		
(55-68) D		
(39-54) E		
(21-38) F		
(1-20) G		
Not environmentally friendly - higher CO <sub>2</sub> emissions		
<b>England &amp; Wales</b>	EU Directive 2002/91/EC	

